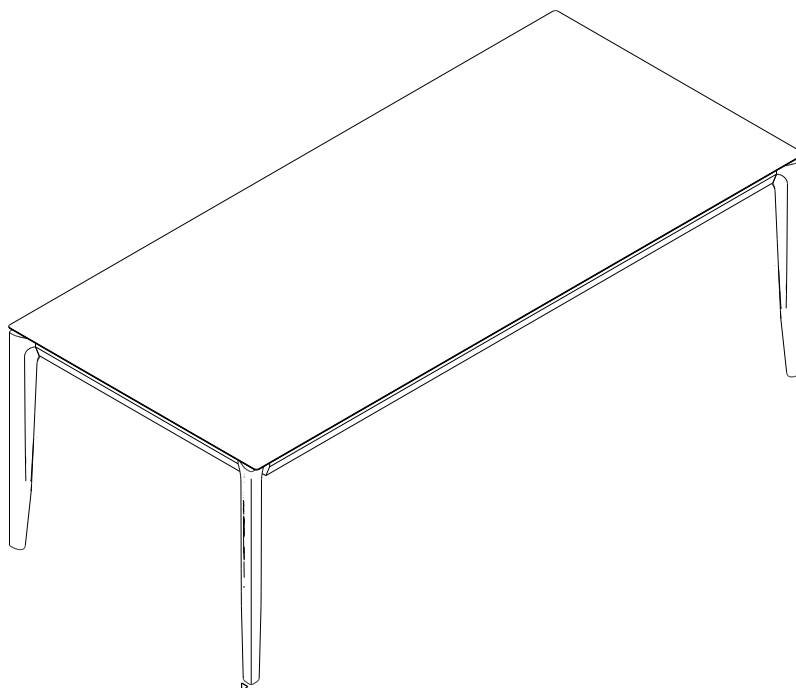


# Ethnicraft

## ASSEMBLY INSTRUCTIONS FOR TABLE INSTALLATION

### OAK BOK DINING TABLE

CODE	DESCRIPTION
<b>NATURAL FINISHING</b>	
51495	OAK BOK DINING TABLE 160/80/76
51496	OAK BOK DINING TABLE 180/90/76
51497	OAK BOK DINING TABLE 200/95/76
51498	OAK BOK DINING TABLE 220/95/76
51499	OAK BOK DINING TABLE 240/100/76
51500	OAK BOK DINING TABLE 140/80/76
<b>BLACK FINISHING</b>	
51505	OAK BOK BLACK DINING TABLE 160/80/76
51506	OAK BOK BLACK DINING TABLE 180/90/76
51507	OAK BOK BLACK DINING TABLE 200/95/76
51508	OAK BOK BLACK DINING TABLE 220/95/76
51509	OAK BOK BLACK DINING TABLE 240/100/76
51511	OAK BOK BLACK DINING TABLE 140/80/76
<b>BROWN FINISHING</b>	
51555	OAK BOK BROWN DINING TABLE 140/80/76
51556	OAK BOK BROWN DINING TABLE 160/80/76
51557	OAK BOK BROWN DINING TABLE 180/90/76
51558	OAK BOK BROWN DINING TABLE 200/95/76
51559	OAK BOK BROWN DINING TABLE 220/95/76
51560	OAK BOK BROWN DINING TABLE 240/100/76
<b>VARNISHED FINISHING</b>	
55200	OAK BOK DINING TABLE - VARNISHED 140/80/76
55201	OAK BOK DINING TABLE - VARNISHED 160/80/76
55202	OAK BOK DINING TABLE - VARNISHED 180/90/76
55203	OAK BOK DINING TABLE - VARNISHED 200/95/76
55204	OAK BOK DINING TABLE - VARNISHED 220/95/76
55205	OAK BOK DINING TABLE - VARNISHED 240/100/76

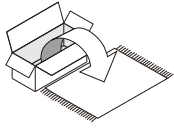


## OAK BOK DINING TABLE

### ASSEMBLY INSTRUCTIONS FOR DINING TABLE INSTALLATION



#### NOTE



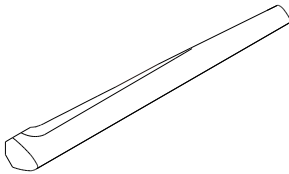
- CAREFULLY OPEN THE CARTON,
- REMOVE CONTENTS AND LAY OUT ON CARPET OR THE PACKAGING CARTON BOX OR OTHER PROTECTIVE SURFACE TO AVOID DAMAGE.
- CHECK PACKAGE CONTENTS TO ASSURE ALL THE NECESSARY HARDWARE AND PARTS ARE RECEIVED UNDAMAGED.
- DO NOT USE DAMAGE OR DEFECTIVE PARTS/HARDWARE.
- CONTACT ETHNICRAFT FOR ANY MISSING PART AND /OR HARDWARE.



- READ THE ASSEMBLY INSTRUCTION BEFORE INSTALLATION AND CAREFULLY FOLLOW THE INSTRUCTION GIVEN.
- SEEK THE ADVICE OF A PROFESSIONAL IF YOU ARE NOT FAMILIAR WITH THESE INSTALLATIONS OR HAVE ANY DOUBTS ABOUT THE SAFETY OF THIS INSTALLATION.



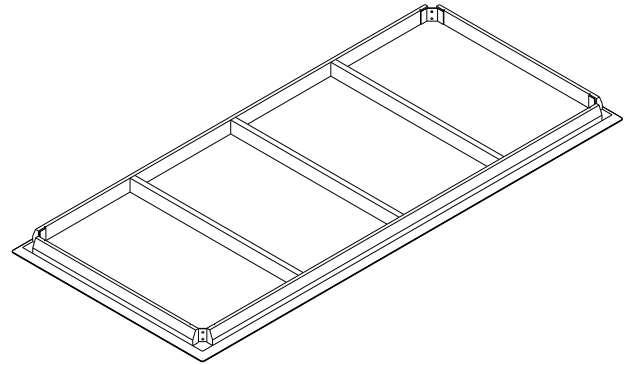
- IT IS ADVISABLE TO DO THIS ASSEMBLY WITH MINIMUM OF 2 PERSONS.



#### B LEG 4 pieces

CODE	DESCRIPTION
<b>NATURAL FINISHING</b>	
P4678	LEG FOR 80, 90, 95 DEPTH
P4651	LEG FOR 100 DEPTH
<b>BLACK FINISHING</b>	
P4685	LEG - BLACK FOR 80, 90, 95 DEPTH
P4691	LEG - BLACK FOR 100 DEPTH
<b>BROWN FINISHING</b>	
P4800	LEG - BROWN FOR 80, 90, 95 DEPTH
P4801	LEG - BROWN FOR 100 DEPTH
<b>VARNISHED FINISHING</b>	
P5061	LEG - BROWN FOR 80, 90, 95 DEPTH
P5062	LEG - BROWN FOR 100 DEPTH

#### PARTS TO ASSEMBLE



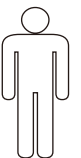
#### A TABLE TOP 1piece

CODE	DESCRIPTION
<b>NATURAL FINISHING</b>	
P4680	TABLE TOP 160x80
P4681	TABLE TOP 180x90
P4471	TABLE TOP 200x95
P4682	TABLE TOP 220x95
P4683	TABLE TOP 240x100
P4679	TABLE TOP 140x80
<b>BLACK FINISHING</b>	
P4687	TABLE TOP - BLACK 160x80
P4555	TABLE TOP - BLACK 180x90
P4688	TABLE TOP - BLACK 200x95
P4689	TABLE TOP - BLACK 220x95
P4690	TABLE TOP - BLACK 240x100
P4686	TABLE TOP - BLACK 140x80
<b>BROWN FINISHING</b>	
P4794	TABLE TOP - BROWN 140x80
P4795	TABLE TOP - BROWN 160x80
P4796	TABLE TOP - BROWN 180x90
P4797	TABLE TOP - BROWN 200x95
P4798	TABLE TOP - BROWN 220x95
P4799	TABLE TOP - BROWN 240x100
<b>VARNISHED FINISHING</b>	
P5055	TABLE TOP - VARNISHED 140x80
P5056	TABLE TOP - VARNISHED 160x80
P5057	TABLE TOP - VARNISHED 180x90
P5058	TABLE TOP - VARNISHED 200x95
P5059	TABLE TOP - VARNISHED 220x95
P5060	TABLE TOP - VARNISHED 240x100

#### SYMBOLS



DIRECTION


NUMBER OF  
PERSONS NEEDED

#### HARDWARE ENCLOSED

<p><b>H0689</b> <b>SPAX SCREW</b> <b>M6x80</b> <b>(8pcs)</b></p>	<p><b>H0383</b> <b>WASHER</b> <b>M8</b> <b>(8pcs)</b></p>
--	---

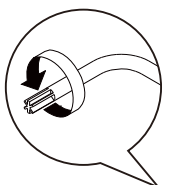
#### TOOL

(Included in packaged)

<p><b>H0893</b> <b>TORX ALLEN KEY</b> <b>(1pc)</b></p>
--



USE HAND

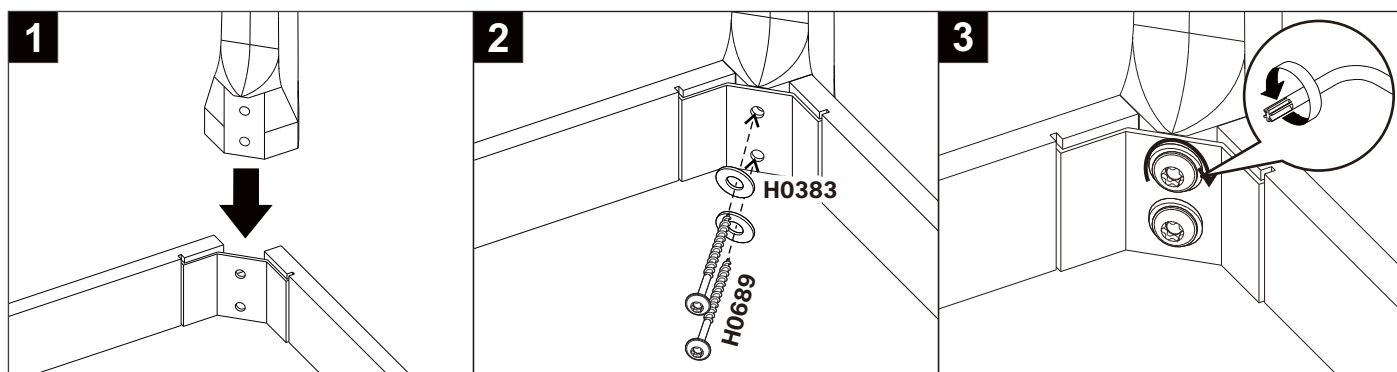
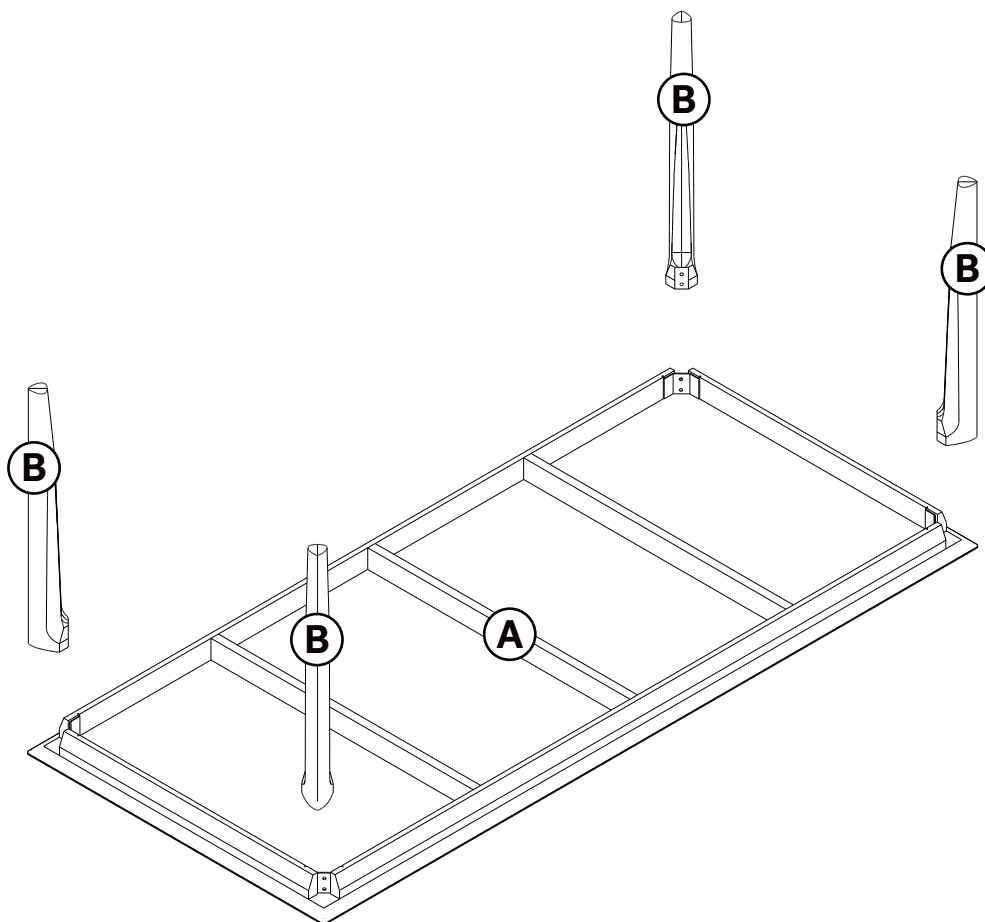

USE TORX ALLEN KEY  
TO TIGHTEN

## OAK BOK DINING TABLE

### ASSEMBLY INSTRUCTIONS FOR DINING TABLE INSTALLATION



#### CONNECTING THE LEGS AND THE TABLE TOP



- DO NOT TIGHTEN SCREWS TOO MUCH INITIALLY
- TO BE CHECKED AND RE-ADJUSTED AFTER 15 DAYS OF USE
- REPEAT STEPS 1-3 ON REMAINING LEGS